

Rezultati završnog ispita održanog 27.2.2021. godine

Br. indeksa	Zadaci				Ukupno zadaci (20)	Teorija	Ukupno bodova (30)
	Zadatak 1 (9b)	Zadatak 2 (4b)	Zadatak 3 (3b)	Zadatak 4 (4b)		Teorija (10)	
18867							
18957	7.5	3			10.5	5.33	15.83
18312							
18544	8	2	2	1.5	13.5	10	23.5
18545							
19000							
18931	8.5	3.75	2.5	3.5	18.25	10	28.25
18795							
18870							
18345							
18793	8	2	3	1.5	14.5	10	24.5
18818							
18794							
18789	6.5	0	3	1.5	11	6	17
18850							
17864	7	0	1.5	1	9.5	8	17.5
18220							
18958							
18721							
18892							
18960							
18929	9	2.5	1	4	16.5	6	22.5
18557	6	2.5	1	1.5	11	4	15
18915							
18835	8.5	3.75	0.5	0.5	13.25	10	23.25
18498	4	0.25	1	0.5	5.75	4	9.75
18887	8	3.5	0.5	2.5	14.5	8	22.5
18898							
18596	9	0.5			9.5	8	17.5
18894							
18997							
18306	9	2	1	1.5	13.5	2	15.5

18908							
18947						2	2
18949							
17902							
18936							
18830	7	4	1.5	3.5	16	6	22
18628	8	3.5	1	2	14.5	8	22.5
18769							
18854	0	0	1	1.5	2.5	6	8.5
18954	7	1	2	2	12	7.33	19.33
18963							
18844	2.5	2.5	1	1.5	7.5	6.67	14.17
18709	7	0	0.5	1.5	9	6	15
18812	7	1.5	3	0	11.5	8	19.5
18837							
18253							
18962	8.5	3	1	1	13.5	8	21.5
18401							
18822	6	0	2	2.5	10.5	8	18.5
18668							
18852	7	2	0.5	0	9.5	8	17.5
18893	8.5	0	0.5	0	9	8	17
18372	4.5	0	0	0	4.5	6	10.5
18928	6.5	2	1.5	0.5	10.5	6	16.5
18382							
18704							
18151							
18108	4	0	3	0.5	7.5	6	13.5
18550	6.5	0	1	0.5	8	5.33	13.33
18778							
18748							
18657	5	0	1.5	0.5	7	8	15
18858							
18641	6	3	2	1.5	12.5	9.33	21.83
17177							
18927	7.5	0	1		8.5	2	10.5
18098							
18817	9	1.5	2	3.5	16	8	24
18841	6.5	0	1.5	1.5	9.5	6	15.5
18902							
18971							
18075							
18787	7.5	0	1	1.5	10	4	14
18767							
18889							
18701						10	10
18322							
17464							

18900							
18521	4	0	2	0.5	6.5	8	14.5
18874							
18907	3	0	0	0	3	4.67	7.67
18923							
18943							
17900							
18951	9	0	1.5		10.5	10	20.5
18392	5.5				5.5	4	9.5
18888							
18815							
18438	5.5	0	1	2	8.5	6	14.5
18826	5	4	1.5	1.5	12	4	16
18654	5	0	3		8	6	14
18763	5	1.5	0	1.5	8	8	16
17681							
18885	5.5	1.5	1	0.5	8.5	8	16.5
18790							
18781							
18896							
18965	4	0	0.5	0	4.5	6	10.5
17734							
18179	3.5				3.5	8	11.5
18645							
18697							
18730	7	1.5			8.5	6	14.5
18758							
18242							
18903	8	1.5	0.5	1	11	4	15
18448	8	2.5	1.5	1.5	13.5	10	23.5
18292	8			1.5	9.5	9.33	18.83
18823	6.5	0	1	1	8.5	9.33	17.83
18950							
18961							
16967							
18256	7.5	2	0.5	2	12	2	14
18847							
18880	7.5	0	2.5	0.5	10.5	8	18.5
18998							
18973	7.5	3	3	1.5	15	6	21
18865							
18895							
18934	7	1.5	0.5	4	13	8	21
18977							
18528							
18862	4.5	2.75		2	9.25	4	13.25
18719	8.5	0.25		2	10.75	10	20.75
18809							

18909	5.5	2.5	1.5	1	10.5	8	18.5
17954							
17653							
18210	4	0	0	0	4	8	12
18933							
18996	3.5	0	0	1.5	5	8.67	13.67
18773							
18974	7.5	0	1	1.5	10	4	14
17315							
18833							
18840	6	0.5	1.5	2	10	6	16
18905							
18986							
17170							
18782							
18368	7.5	0	2	0	9.5	6	15.5
18878							
18599							
18672							
18890	9	1.25	1	1	12.25	6	18.25
18673	7.5	2.5	0.5	0.5	11	10	21
18317	3	0.75	0	0	3.75	6	9.75
18975							
18938	4.5	1	0.5	1	7	8	15
18042							
18798							
18922	6.5	1.5		1.5	9.5	6	15.5
18442							
18716	8.5	1.5	3	1	14	8	22
18920	8	0	2	0	10	6	16
18879	5.5	2.5	1	2	11	4	15
18724	6	0	1	1	8	8	16
18336							
18872	5	0	3	2	10	4	14
16763							
18801							
18609	7	3.5	1.5	0	12	6	18
18982							
17716	5.5			2	7.5	8	15.5
18913	7.5	0.5	1	1.5	10.5	4	14.5
18689						2	2
18020							
18855							
18842							
18698	7	0	2	1	10	4	14
18939	7.5	2.5	3	2	15	4	19
18932	5.5	4	0.5	1	11	5	16
17684							

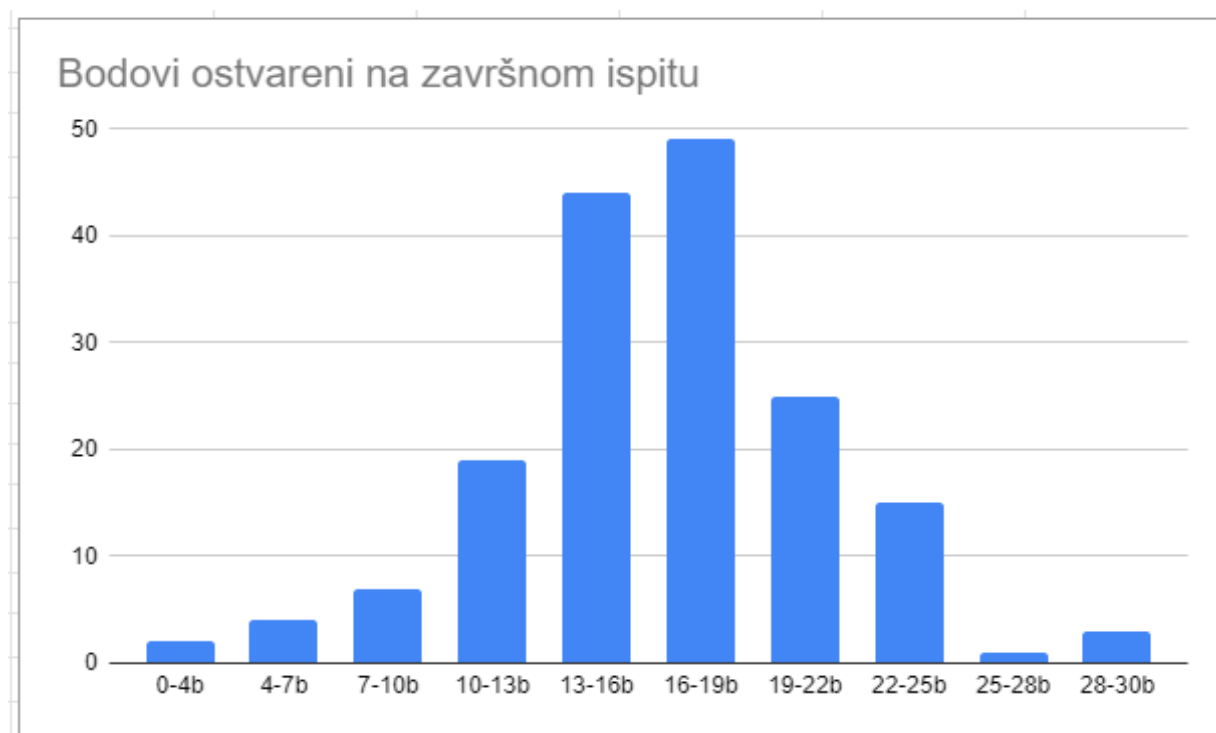
18546							
18946							
18797	7	0	1		8	6	14
18820	6	1	1	2	10	6	16
18824							
18851	7.5	2.5		2	12	3	15
18200							
18964	9	4	1		14	8	22
18630	9	0	0	0	9	7.33	16.33
18838							
18243							
18999							
18911							
18859	7	1		0	8	2	10
16878							
18876							
18873							
18904	4.5	0.5	1	1.5	7.5	8	15.5
18976	6				6	10	16
18381							
18980							
18683	7			0	7	5	12
18485	7	0	1.5	2	10.5	4	14.5
18967							
18906							
18703						6	6
18845	8.5	3.5	3	4	19	10	29
18398	7	2.5		2	11.5	6	17.5
18834	5.5	0.5	1.5	2	9.5	8	17.5
18917	6.5	2.5	1	1	11	6	17
18452	8				8		
18881							
18759		1.5	1	2	4.5	4	8.5
18600							
18925							
18930	5	0	2	0	7	5.33	12.33
18994							
18591							
18992	3.5	2.5	1.5	2	9.5	6	15.5
18991	3.5	2	1	2	8.5	8	16.5
18556	5	0	2	0.5	7.5	8	15.5
18901							
18741	5.5			1.5	7	6	13
18765	2	0	3	0	5	2	7
18981							
18636	8.5	2	2	1	13.5	8	21.5
18825	6	2	1	2	11	6	17
18337							

18632	5.5	1.25	1	0	7.75	6	13.75
18072	7.5	1.5	2.5	1.5	13	7.33	20.33
18860	8.5	3.75	2	2	16.25	4	20.25
18827							
16858						6	6
18828							
17722							
18396							
18766							
17166							
17984	7	0	1	1.5	9.5	8	17.5
18796	8.5	1	0	3.5	13	6	19
18882							
18746							
18856							
18621	8			1.5	9.5	10	19.5
18937							
18984							
18829							
17724	5.5	0.5	1	1.5	8.5	6	14.5
18899	4.5	2.5	1	1.5	9.5	8	17.5
18848	5.5				5.5	6	11.5
18959							
18843	3	2	2.5	1	8.5	9.33	17.83
18953							
18774							
18739	8.5	0	2	0	10.5	8	18.5
18811	5.5	1.5	0.5	1	8.5	4	12.5
18821	6.5	2.5	2	1	12	8	20
18260							
18836	7.5				7.5	2.67	10.17
18868							
18891	7	0	1	1	9	4	13
18694							
18988							
18804	5	1.5	0.5	1.5	8.5	8	16.5
17606	5.5	0.5			6	8	14
18940							
18978							
18985							
18757	5	4	0	0	9	4	13
18808	8.5	0	3	0	11.5	6	17.5
18429							
17525							
18454	8	2.5	1	4	15.5	8	23.5
18570	4	1.75	2	0.5	8.25	4	12.25
18619	3.5			1.5	5	8	13
18993							

18665							
18813							
18983							
18910							
18916	9	3.5	3	4	19.5	10	29.5
18093							
18849	6.5	0.5	0.5	1	8.5	6	14.5
17711							
18956							
18944							
18670	7.5	0	2	2	11.5	6	17.5
18853							
18693	8	0	1	2	11	8	19
18682							
18924	7	1.5	1	1.5	11	10	21
18869							
18515							
18970							
18875	7.5	1.5	2.5	3.5	15	6	21
18832							
18942							
18884							
18712							
18941							
18676							
18866							
18635	5				5	6	11
18717	7.5	2	1	1.5	12	8	20
18861							
18952	7.5	1.5	3	2	14	5.33	19.33
18972							
18663							
18622	5.5	0	2	1.5	9	8	17
18948							
18090							
18799							
18613	6	0	1	1	8	6	14
18918	7.5	1.5	0	2	11	8	19
18776							
18800	5			0.5	5.5	6	11.5
18614	9	0.5	2.5	2	14	2	16
18733							
18919	4.5	2.5	0	4	11	10	21
18914							
18500							
18138							
18945							
18831							

18926							
18802							
18839	6.5	2	2	1.5	12	6	18
18786							
17675							
18989							
18077							
18871							
18969							
18671	5.5	0	1	0.5	7	10	17
18458	8				8	8	16
18688							
18864	9	0.5	1	4	14.5	8	22.5
17881							
18857	8	1	2	2	13	6	19
18968							
18966							
18651	5.5	0	2.5		8	10	18
18863	6.5	3.5	3	1.5	14.5	4	18.5
18806	6	0	0	0.5	6.5	0	6.5
18520	5	1.5	0	2	8.5	2	10.5
18921	7	0	2	0.5	9.5	2	11.5
18598	8	0	2.5	1	11.5	6	17.5
18190							
18589	8	2	3	1.5	14.5	10	24.5
18783							
18137							
18819							
18883							
18249							
18990							
18935	6	1.5	0.5	1.5	9.5	6	15.5
18405	9	2.5	2	2	15.5	10	25.5
18886							
18488							
18653	6.5	0	0	2	8.5	10	18.5
18286	2.5	0	1	1.5	5	8	13
18810	7.5	2.5	1	1.5	12.5	4	16.5
18897						4	4
18912							
18979	6	1	2.5	1	10.5	8	18.5
18702	4	2.5	3	1.5	11	6	17
18816	6.5	0	3	1.5	11	10	21
18877	7.5	4	3	1.5	8.5	8	16.5
18987							
17608							
18658							
18807							

18805							
18087	3	0	0	1	1	8	9
17913							
18803							
18955	7.5	1.5	0	0	1.5	8	9.5
18705							
18846							
18674	7	0.5	0	1.5	2	2	4
18779							
17573							
18633							
18777							
18814							
18638	8	0	2.5	2	4.5	6	10.5



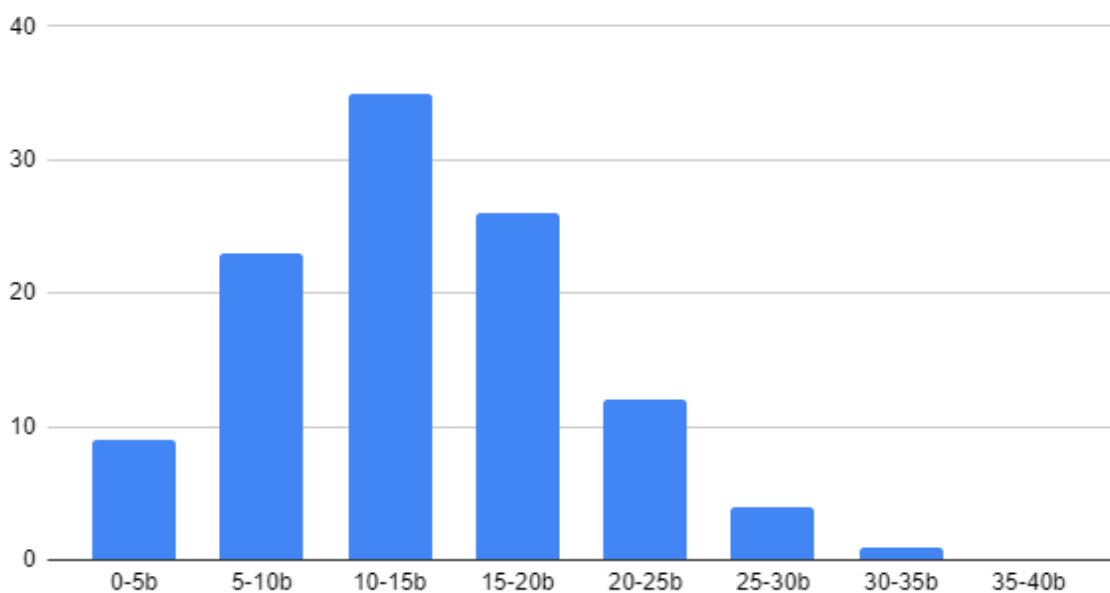
18838		0		3.5	3	0	2.5	9	8	9
18243	2	6	1	7.5	2.5	3	2	24	20	44
18999										
18911										
18859										
16878										
18876	1		1	6.5	2	1	1	12.5	12	12.5
18873	1	4.5	1	5	2.5	2	0	16	12	16
18904										
18976										
18381										
18980	2.5	5	0	4.5	0.5	0.5	1	14	13	14
18683										
18485										
18967	0.5	0		9	0	0.5	2	12	10	12
18906	2.5	3	1	7.5	0	2		16	6	16
18703										
18845										
18398										
18834										
18917										
18452										
18881	1.5	5	5	11	2.5	3		28	10	38
18759										
18600	1		0	7	0	0	1	9	10	9
18925			0	6.5	2.5	2.5	0.5	12	12	12
18930										
18994	0.5	4	3	10.5	1.5	2		21.5	12	33.5
18591										
18992										
18991										
18556										
18901	0.5			8	3	0	0	11.5	10	11.5
18741										
18765										
18981	4	5	0	5.5		2.5	0	17	14	17
18636										
18825										
18337										
18632										
18072										
18860										
18827	0.5	2		7	2.5	0	1	13	18	13
16858										
18828	0	0	0	1.5	0	0	0	1.5	12	1.5
17722										
18396									14	
18766	2.5	6		5.5	0.5	2.5		17	12	17

17166										
17984										
18796										
18882	1	0	1	3		0		5	8	5
18746										
18856		4.5	1	7.5	0	0		13	8	13
18621										
18937	2	5		7.5	2	2.5	1	20	10	30
18984	2	4.5	5	8.5				20	11.33	31.33
18829			1	1.5		0		2.5	14	2.5
17724										
18899										
18848										
18959	0.5			6				6.5	4	6.5
18843										
18953										
18774	0	5		3		0	1	9	8	9
18739										
18811										
18821										
18260										
18836										
18868	0.5	2.5		7	0	0		10	8	10
18891										
18694	2	6	5	8	2.5	2	1.5	27	16	43
18988	0	0	0	0	0	0	0		6	
18804										
17606										
18940	1	5		5.5	1.5	3	1	17	10	17
18978										
18985	0.5	5	0	6	0.5	0.5	1	13.5	4	13.5
18757										
18808										
18429										
17525										
18454										
18570										
18619										
18993	1.5	0	0	8	0	2.5		12	15.33	12
18665	2	0.5	1	6.5		2.5	1.5	14	12	14
18813										
18983	3	0.5		4	0	0.5	0.5	8.5	14	8.5
18910	2	4	0	3.5	0	2.5	1.5	13.5	10	13.5
18916										
18093	0.5	0.5	0	5	0		1.5	7.5	12	7.5
18849										
17711										
18956	4		0.5	4	1	0		9.5	8	9.5

18671										
18458										
18688										
18864										
17881										
18857										
18968										
18966	2		0	9.5	0.5	0		12	8	12
18651										
18863										
18806										
18520										
18921										
18598										
18190										
18589										
18783	0.5	5		2.5		0		8	6	8
18137										
18819										
18883	1.5		1	4	0.5	0	0	7	10	7
18249										
18990	0.5	6	0	6.5	1.5	3	0.5	18	9	18
18935										
18405										
18886										
18488										
18653										
18286										
18810										
18897										
18912		4	2	8.5	0	1	2.5	18	12.67	18
18979										
18702										
18816										
18877										
18987										
17608										
18658										
18807									6	
18805										
18087										
17913										
18803				4		0		4	6	4
18955										
18705	2	6	1	7	0		1	17	12	17
18846	2	3.5	0	5.5		0.5		11.5	14	11.5
18674										
18779	1	1.5		8	1	2.5	0	14	12	14

17573									
18633									
18777									
18814	2.5		7.5		2.5		12.5	14	12.5
18638									

Ostvareni bodovi na dijelu integralnog ispita kojeg čine zadaci



Ostvareni bodovi na dijelu integralnog ispita kojeg čini teorija

